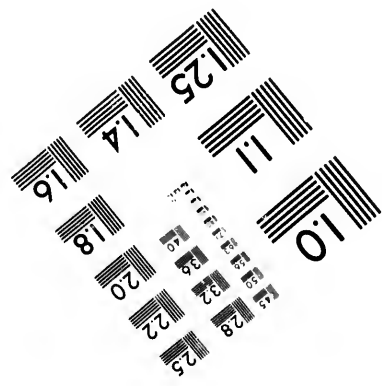
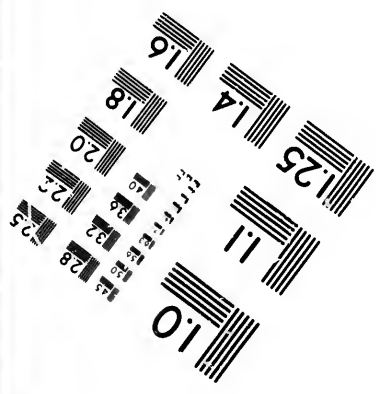
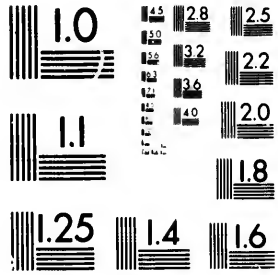


**IMAGE EVALUATION
TEST TARGET (MT-3)**



**CIHM/ICMH
Microfiche
Series.**

**CIHM/ICMH
Collection de
microfiches.**



Technical Notes / Notes techniques

The Institute has attempted to obtain the best original copy available for filming. Physical features of this copy which may alter any of the images in the reproduction are checked below.

L'Institut a microfilmé le meilleur exemplaire qu'il lui a été possible de se procurer. Certains défauts susceptibles de nuire à la qualité de la reproduction sont notés ci-dessous.

- Coloured covers/
Couvertures de couleur
- Coloured maps/
Cartes géographiques en couleur
- Pages discoloured, stained or foxed/
Pages décolorées, tachetées ou piquées
- Tight binding (may cause shadows or distortion along interior margin)/
Reliure serrée (peut causer de l'ombre ou de la distortion le long de la marge intérieure)
- Additional comments/
Commentaires supplémentaires

- Coloured pages/
Pages de couleur
- Coloured plates/
Planches en couleur
- Show through/
Transparence
- Pages damaged/
Pages endommagées

Bibliographic Notes / Notes bibliographiques

- Only edition available/
Seule édition disponible
- Bound with other material/
Relié avec d'autres documents
- Cover title missing/
Le titre de couverture manque
 Plates missing/
Des planches manquent- Additional comments/
Commentaires supplémentaires
- Pagination incorrect/
Erreurs de pagination
- Pages missing/
Des pages manquent
- Maps missing/
Des cartes géographiques manquent

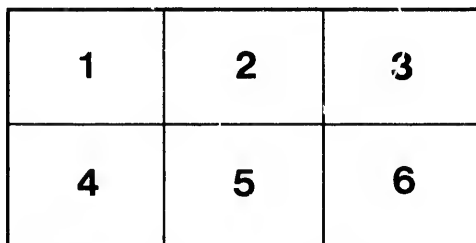
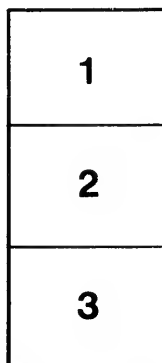
The images appearing here are the best quality possible considering the condition and legibility of the original copy and in keeping with the filming contract specifications.

The last recorded frame on each microfiche shall contain the symbol → (meaning "CONTINUED"), or the symbol ▼ (meaning "END"), whichever applies.

The original copy was borrowed from, and filmed with, the kind consent of the following institution:

National Library of Canada

Maps or plates too large to be entirely included in one exposure are filmed beginning in the upper left hand corner, left to right and top to bottom, as many frames as required. The following diagrams illustrate the method:



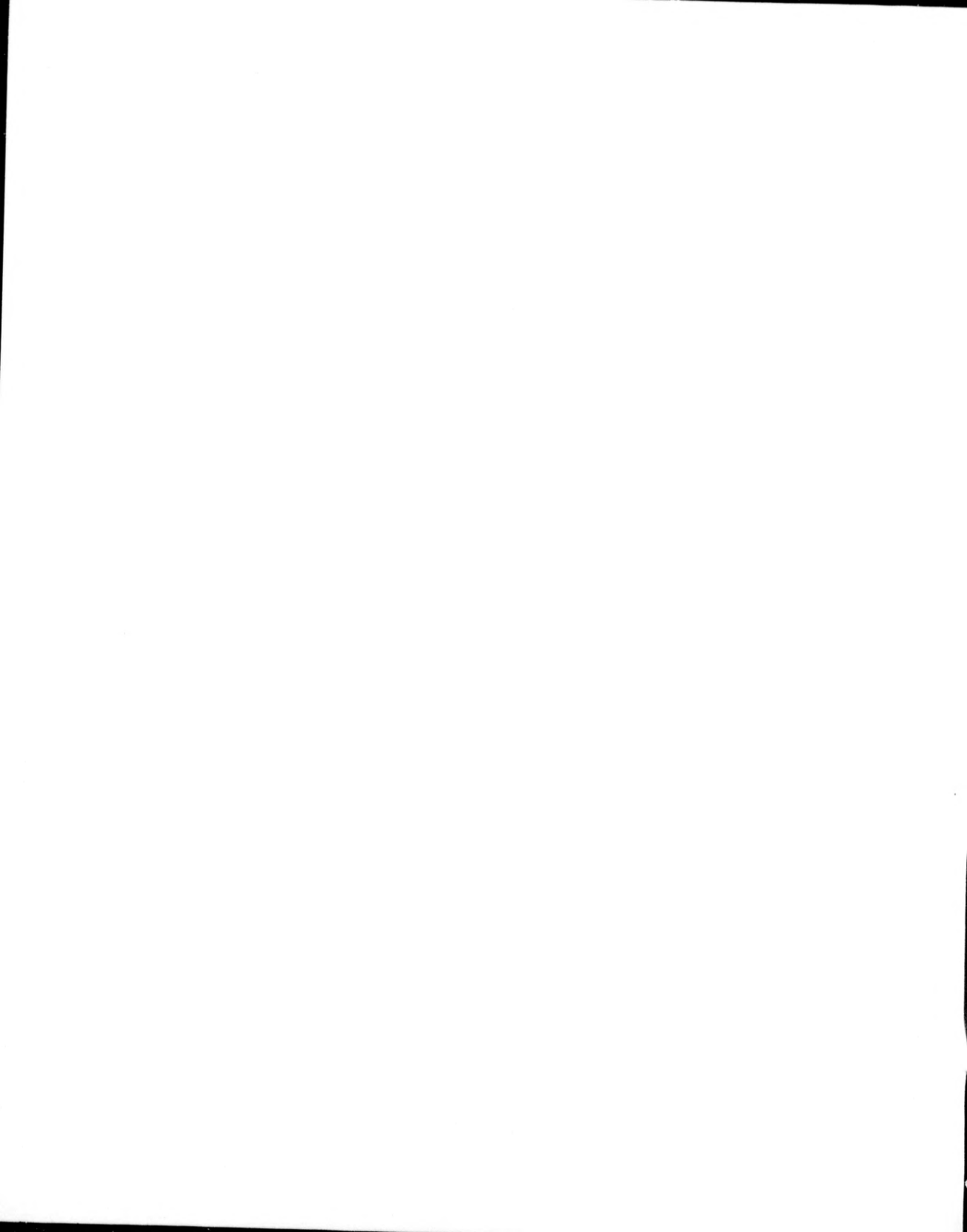
Les images suivantes ont été reproduites avec le plus grand soin, compte tenu de la condition et de la netteté de l'exemplaire filmé, et en conformité avec les conditions du contrat de filmage.

Un des symboles suivants apparaîtra sur la dernière image de chaque microfiche, selon le cas: le symbole → signifie "A SUIVRE", le symbole ▼ signifie "FIN".

L'exemplaire filmé fut reproduit grâce à la générosité de l'établissement prêteur suivant :

Bibliothèque nationale du Canada

Les cartes ou les planches trop grandes pour être reproduites en un seul cliché sont filmées à partir de l'angle supérieure gauche, de gauche à droite et de haut en bas, en prenant le nombre d'images nécessaire. Le diagramme suivant illustre la méthode :



ALUMNI SOUVENIR

ILLUSTRATING
BUILDINGS AND FACULTIES
OF THE
University of Toronto
AND
AFFILIATED COLLEGES

ARTS AND DIVINITY EDITION.

COMPILED AND PUBLISHED BY
M. B. AYLSWORTH, ARCHITECT,
CANADA LIFE BUILDING TORONTO

*Entered according to Act of Parliament of Canada, December, 1892,
by M. B. Aylsworth, in the office of the Minister of Agriculture.*

THE SCOPE OF THIS COLLECTION IS LIMITED TO THE CONFEDERATION OF COLLEGES ACKNOWLEDGING FOR THEIR HEAD THE UNIVERSITY OF TORONTO, RESERVING FOR LATER TREATMENT THOSE EXCELLENT INSTITUTIONS REMAINING INDEPENDENT.

THIS EDITION IS FURTHER LIMITED, GIVING THE FULL FACULTY ONLY IN ARTS AND DIVINITY, A SIMILAR EDITION BEING PROPOSED FOR THOSE INTERESTED IN MEDICINE, PHARMACY, DENTISTRY, MUSIC AND AGRICULTURE.

STILL ANOTHER EDITION IS CONTEMPLATED, TO EMBRACE ONLY THE BUILDINGS OF THE MORE IMPORTANT EDUCATIONAL INSTITUTIONS OF TORONTO.

IT HAS BEEN THE AIM OF THE COMPILER TO EXHIBIT HEREIN THE HIGHEST GRADE OF TORONTO WORKMANSHIP, AND HE IS PLEASED TO NAME THOSE WHOSE EFFORTS HAVE BEEN SO CREDITABLE:

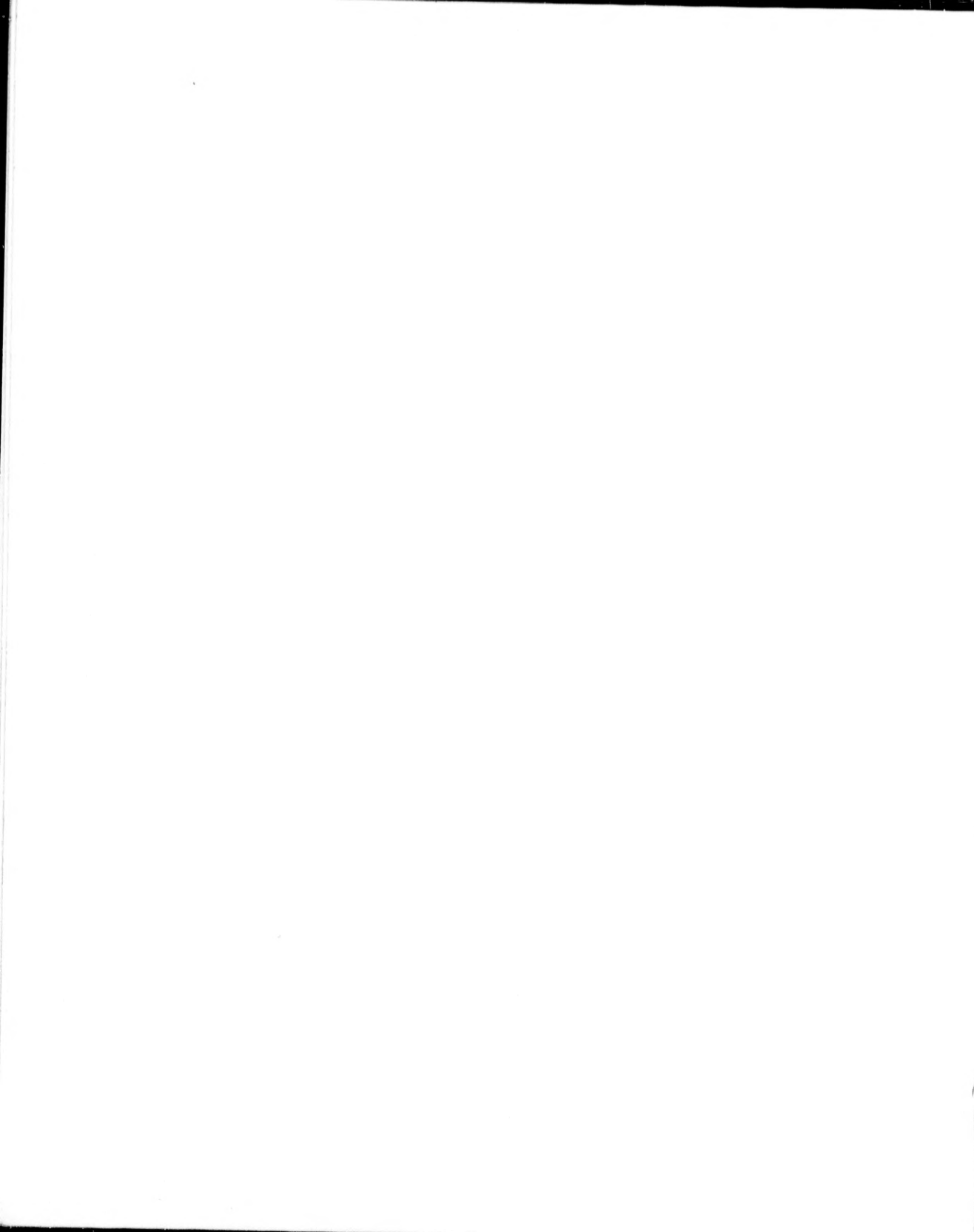
THE ENGRAVING, KNOWN AS THE HALF-TONE PROCESS OF PHOTO-ETCHING ON COPPER, IS BY THE GRIP CO.

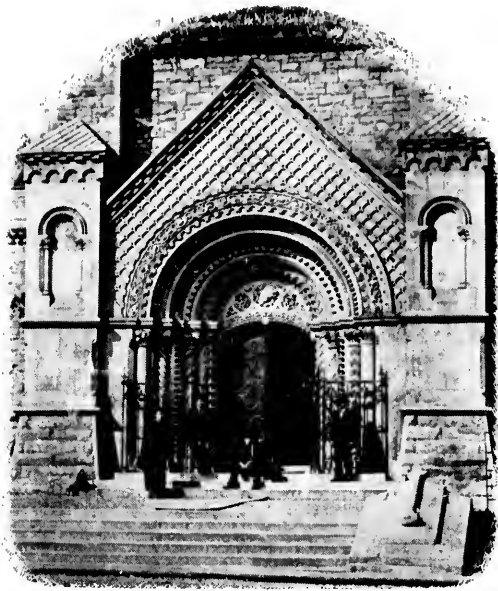
THE PRINTING ON COATED PAPER BY MR. R. G. McLEAN.

THE BINDING BY BROWN BROS.

THE PHOTOS ARE MOSTLY BY MR. J. BRUCE, THOUGH WARMEST THANKS ARE EXTENDED TO THOSE FEW PROFESSORS, WHO IN EACH CASE REQUIRED, SO READILY LOANED THEIR PHOTOS ON REQUEST.

M. B. A.





NORMAN ENTRANCE.
UNIVERSITY COLLEGE.

Bundle "McKIM,"
(Died Aug. 6th, 1892.)

UNIVERSITY COLLEGE.
Built, 1859. Burned, 1890. Restored, 1892.

JAMES BREBNER, B.A.,
Registrar of the University

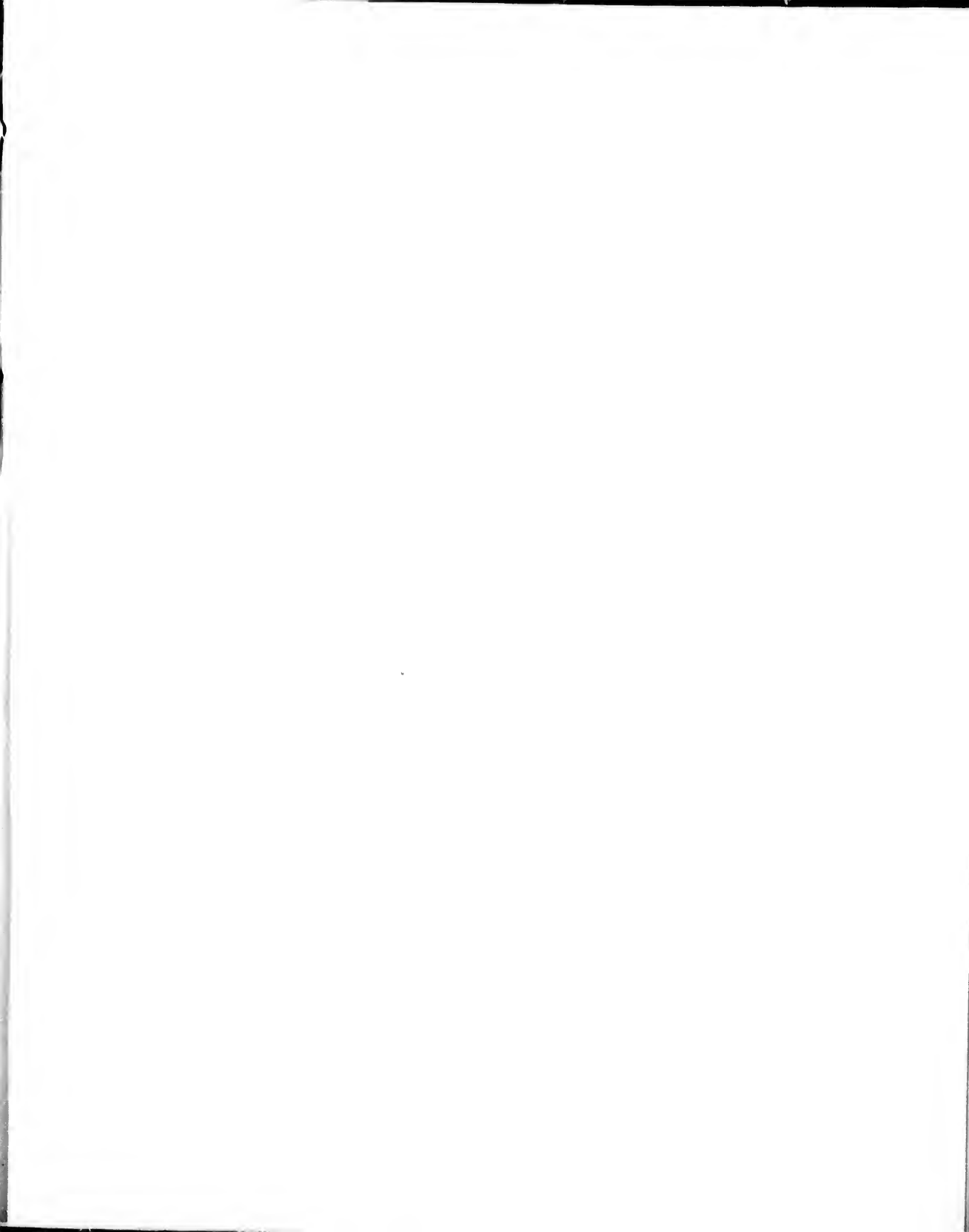
J. E. BERKELEY SMITH, Esq.,
Bursar of the University.

UNIVERSITY LIBRARY BUILDING
Erected 1892.

HUGH H. LANGTON, B.A.,
Librarian of the University.







JAMES LOUDON, M.A.,
President of the University and of University College,
Professor of Physics.

HON. EDWARD BLAKE, M.A., Q.C., LL.D., M.P.,
Chancellor of the University.

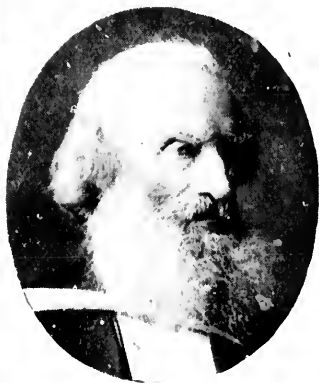
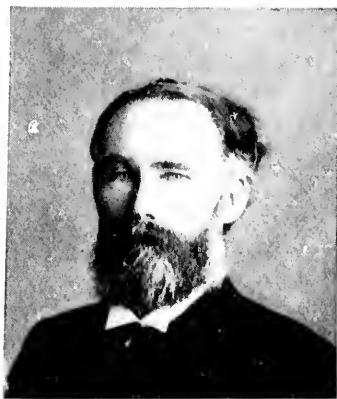
WM. MULOCK, M.A., Q.C., M.P.
Vice-Chancellor of the University.

HON. G. W. ROSS, LL.D., M.P.P.
Minister of Education.

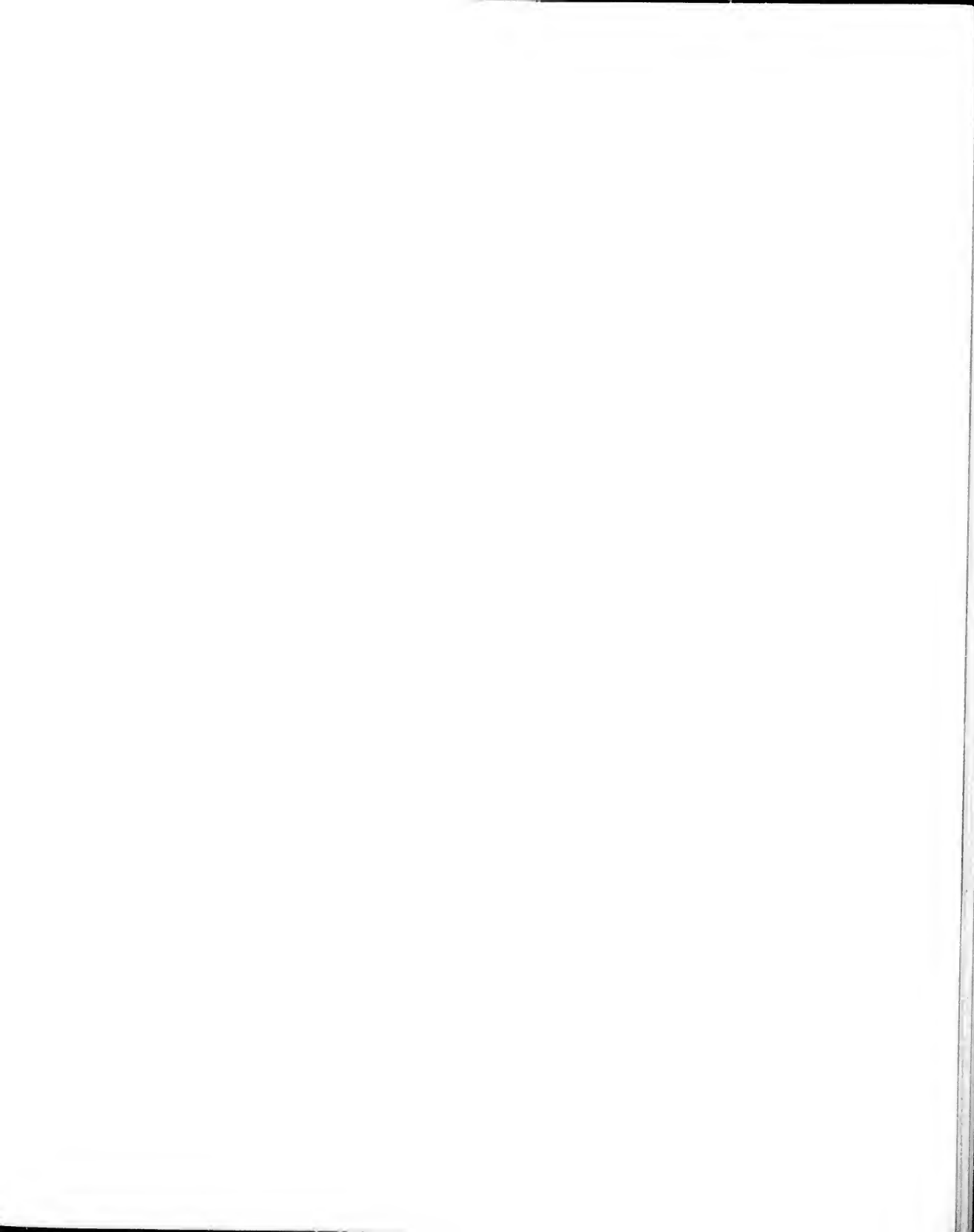
REV. JOHN McCAUL, LL.D.,
Ex-President, 1819-1881.
(Died 1881.)

SIR DANIEL WILSON, LL.D., F.R.S.E.,
Ex-President, 1881-1892.
(Died 1892.)

REV. N. S. BURWASH, S.T.D., LL.D.
President of Victoria College,
Professor of Civil Polity.







R. RAMSAY WRIGHT, M.A., B. Sc.
Professor of Biology.

EDWARD J. CHAPMAN, Ph.D., LL.D.,
Professor of Geology.

ALFRED BAKER, M.A.,
Professor of Mathematics.

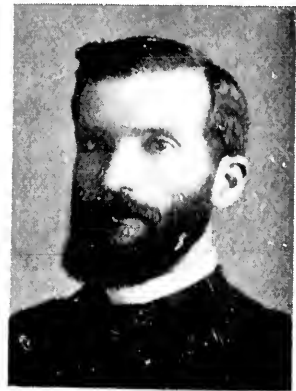
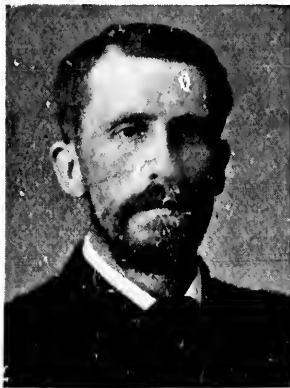
JAMES GIBSON HUME, M.A., Ph.D.,
Professor of Ethics and of the
History of Philosophy.

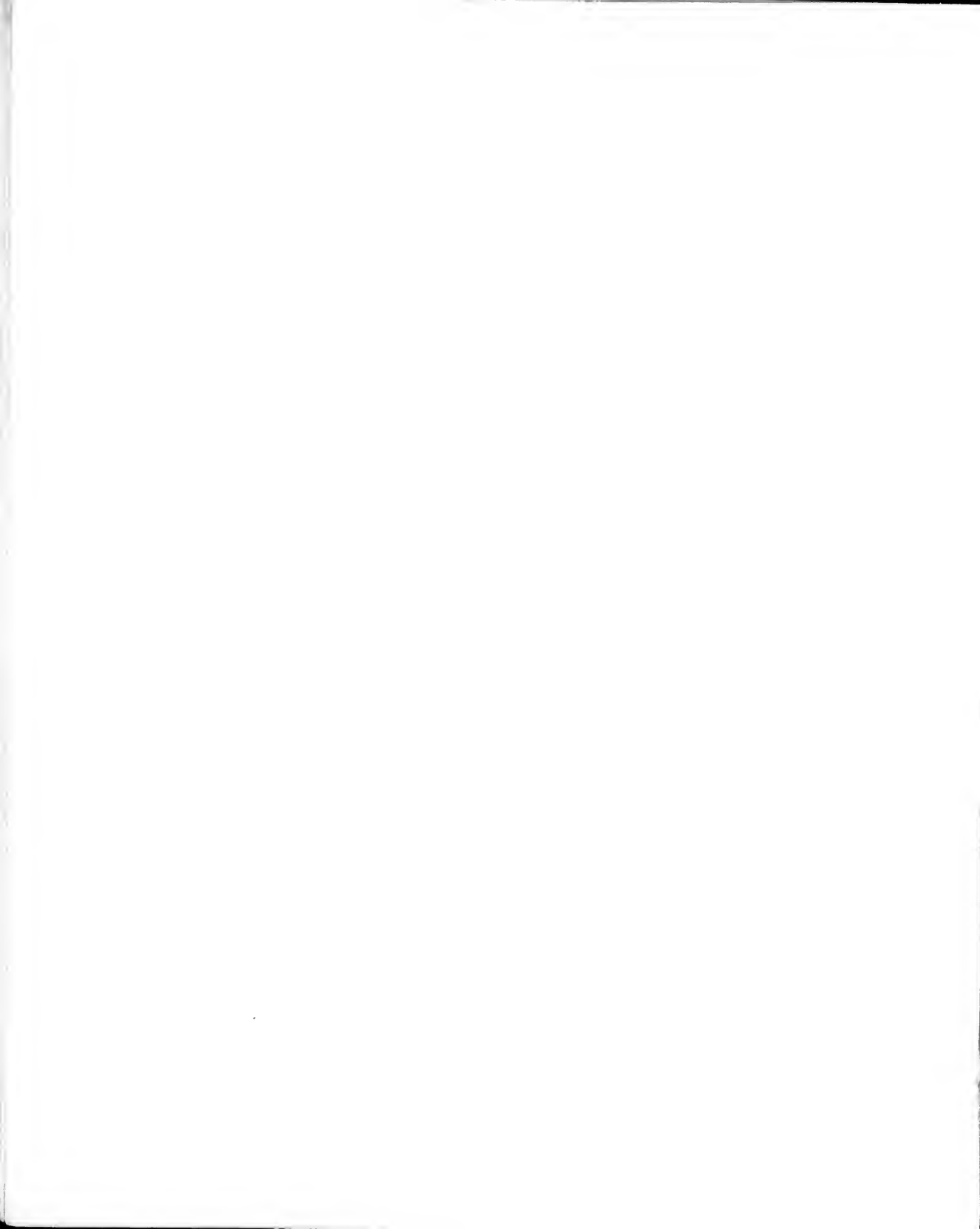
W. H. PIKE, M.A., Ph.D.,
Professor of Chemistry.

JAMES M. BALDWIN, M.A., Ph.D.,
Professor of Philosophy.

W. H. FRASER, B.A.,
Asst. Prof. of Italian and Spanish.

A. B. McCALLUM, B.A., M.B., Ph.D.,
Asst. Prof. of Physiology.







HON. DAVID MILLS, LL.B., Q.C., M.P.,
Professor of Constitutional and
International Law.

JAMES MAVOR, Esq.
Professor of Political Economy and Constitutional History.

HON. WILLIAM PROUDFOOT, J.,
Professor of Roman Law and
General Jurisprudence.

MAURICE HUTTON, M.A.,
Professor of Greek and Comparative
Philology.

J. F. McCURDY, Ph.D.
Professor of Oriental Literature.

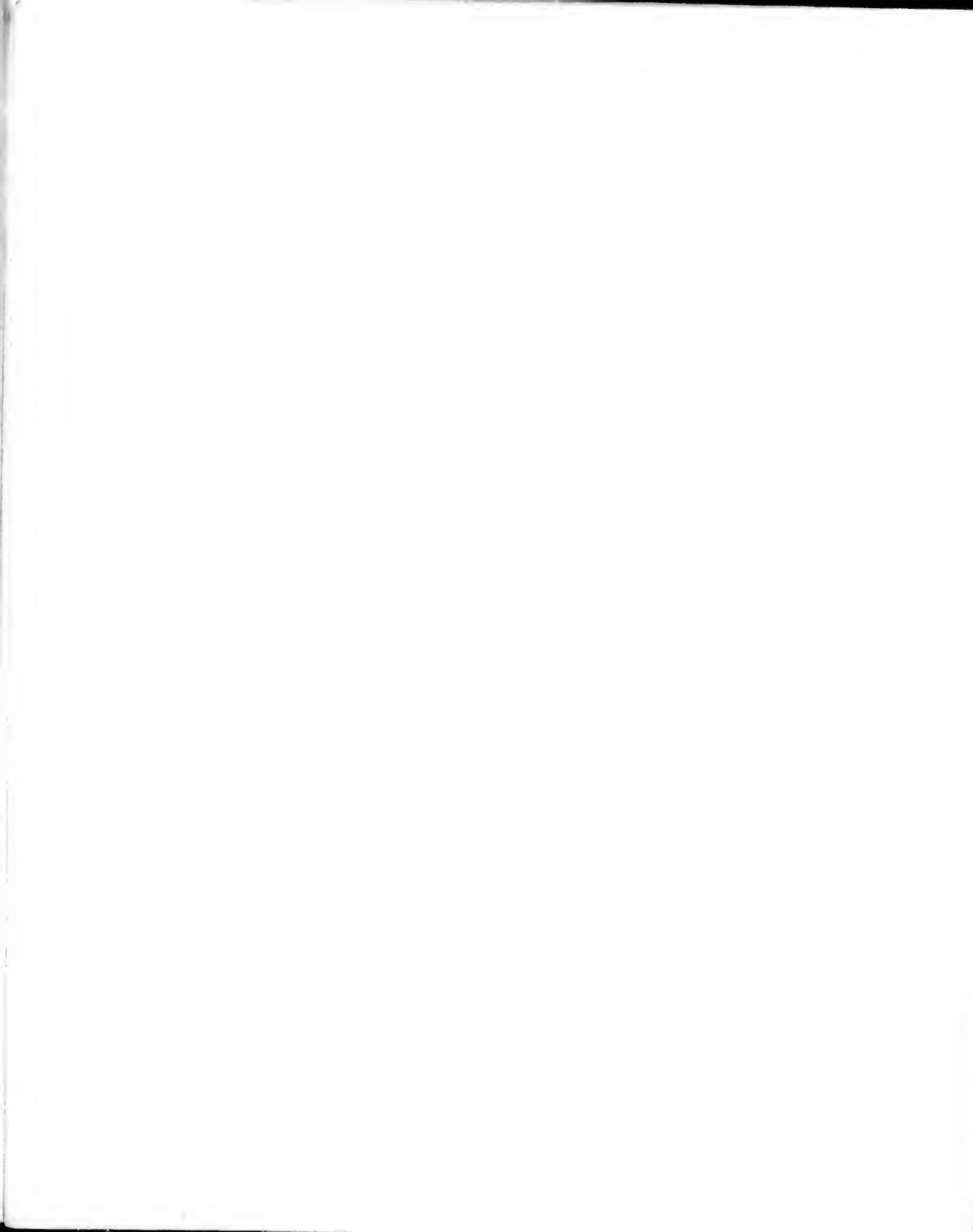
W. J. ALEXANDER, B.A., Ph.D.,
Professor of English.

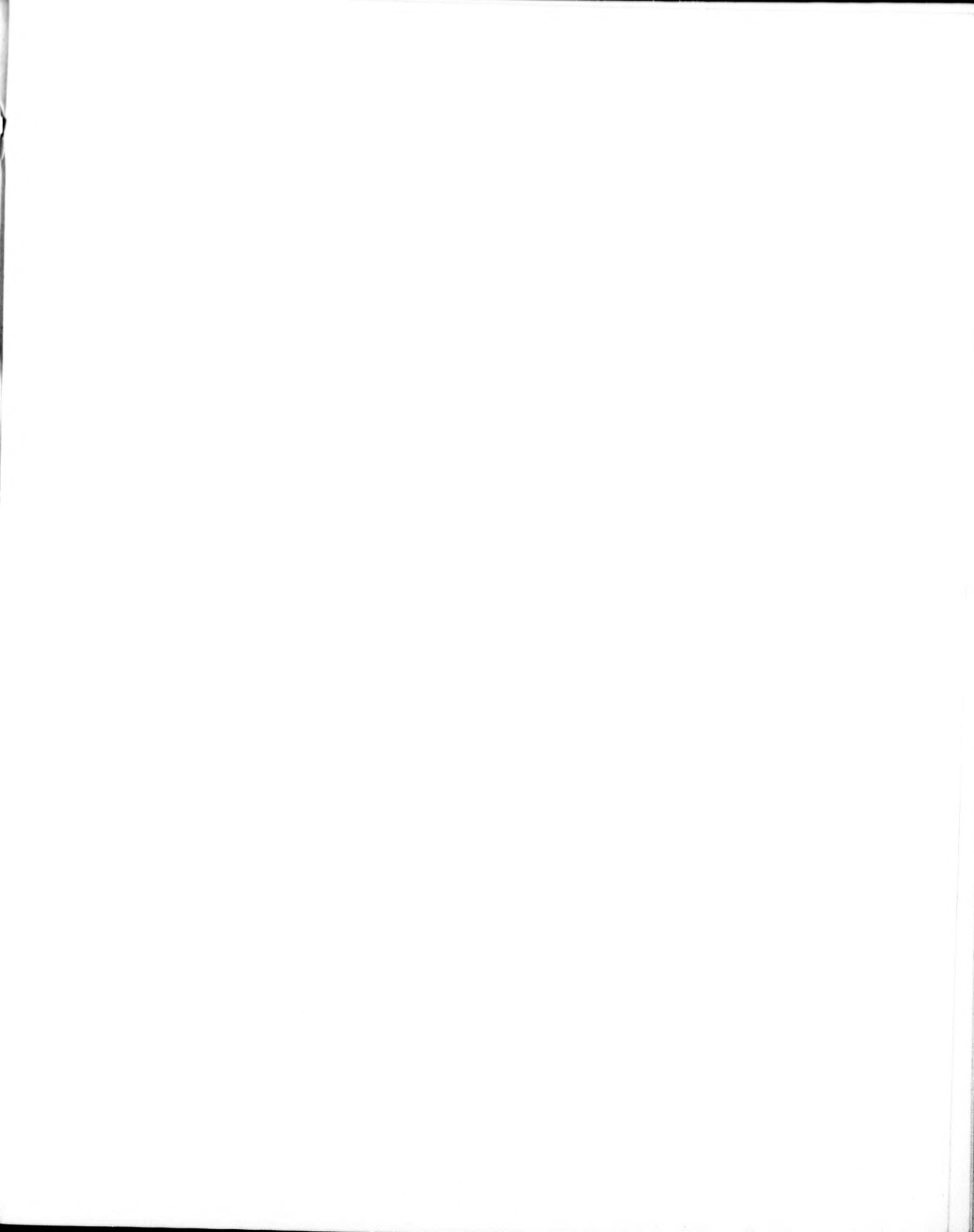
WILLIAM DALE, M.A.,
Asst. Prof. of Latin.

W. H. VANDERSMISSEN, M.A.,
Asst. Prof. of German.

JOHN SQUAIR, B.A.,
Asst. Prof. of French.







C. A. CHANT, B.A.,
Lecturer in Physics.

H. RUSHTON FAIRCLOUGH, M.A.,
Lecturer in Greek.

W. J. LOUDON, B.A.,
Demonstrator of Physics.

JOHN C. McLENNAN, B.A.,
Asst. Demonstrator of Physics.

ALFRED T. DeLURY, B.A.,
Lecturer in Mathematics.

EDWARD C. JEFFREY, B.A.,
Lecturer in Biology.

R. R. BENSLEY, B.A., M.B.,
Asst. Demonstrator in Biology.

W. L. MILLER, B.A., Ph.D.,
Demonstrator of Chemistry.

J. M. McEVOY, B.A.,
Lecturer in History.

W. S. MILLNER, B.A.,
Lecturer in Latin.

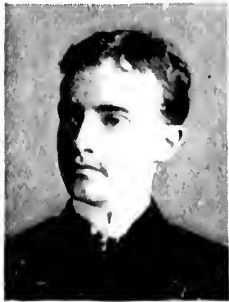
DAVID W. McGEE, B.A.,
Lecturer in Oriental Literature.

G. H. NEEDLER, B.A., Ph.D.,
Lecturer in German.

DAVID R. KEYS, M.A.,
Lecturer in English.

J. H. CAMERON, B.A.,
Lecturer in French.

A. L. LANGFORD, M.A.,
Lecturer in Greek, Victoria College.







A. P. COLEMAN, M.A., Ph.D.,
Professor of Assaying and Metallurgy.

W. H. ELLIS, M.A., M.B.,
Professor of Applied Chemistry.

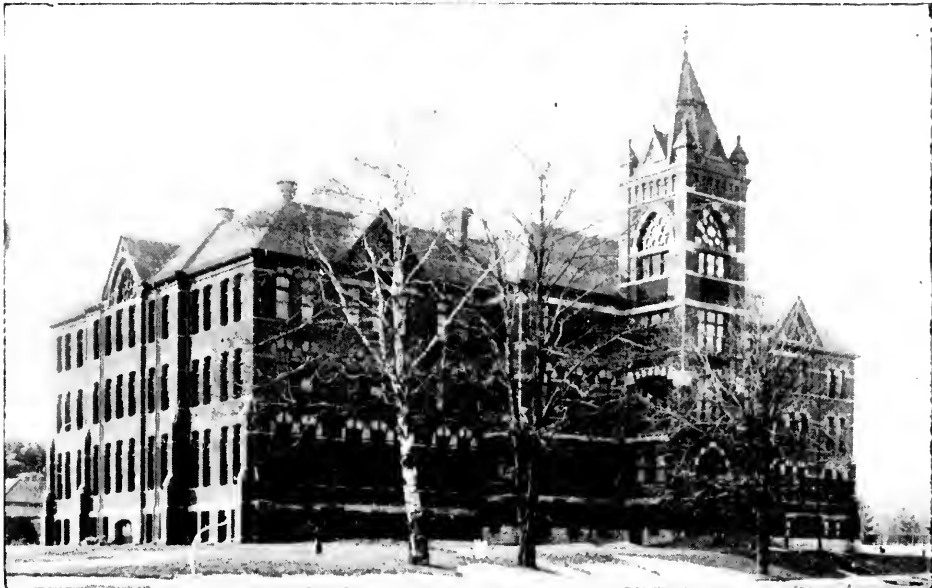
C. H. C. WRIGHT, Grad. S.P.S.,
Lecturer in Architecture.

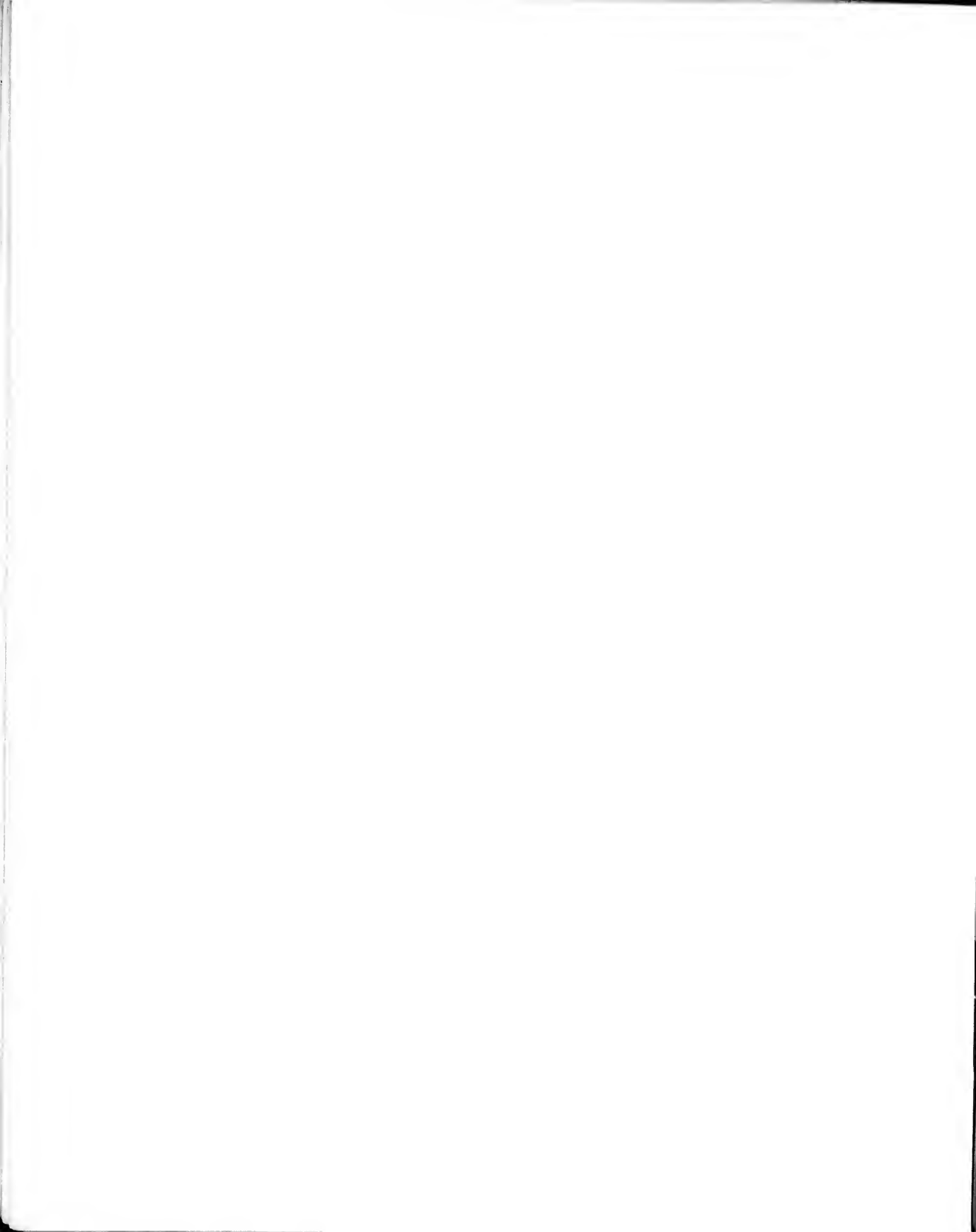
T. R. ROSEBRUGH, B.A., Grad. S.P.S.,
Lecturer in Electrical Engineering.

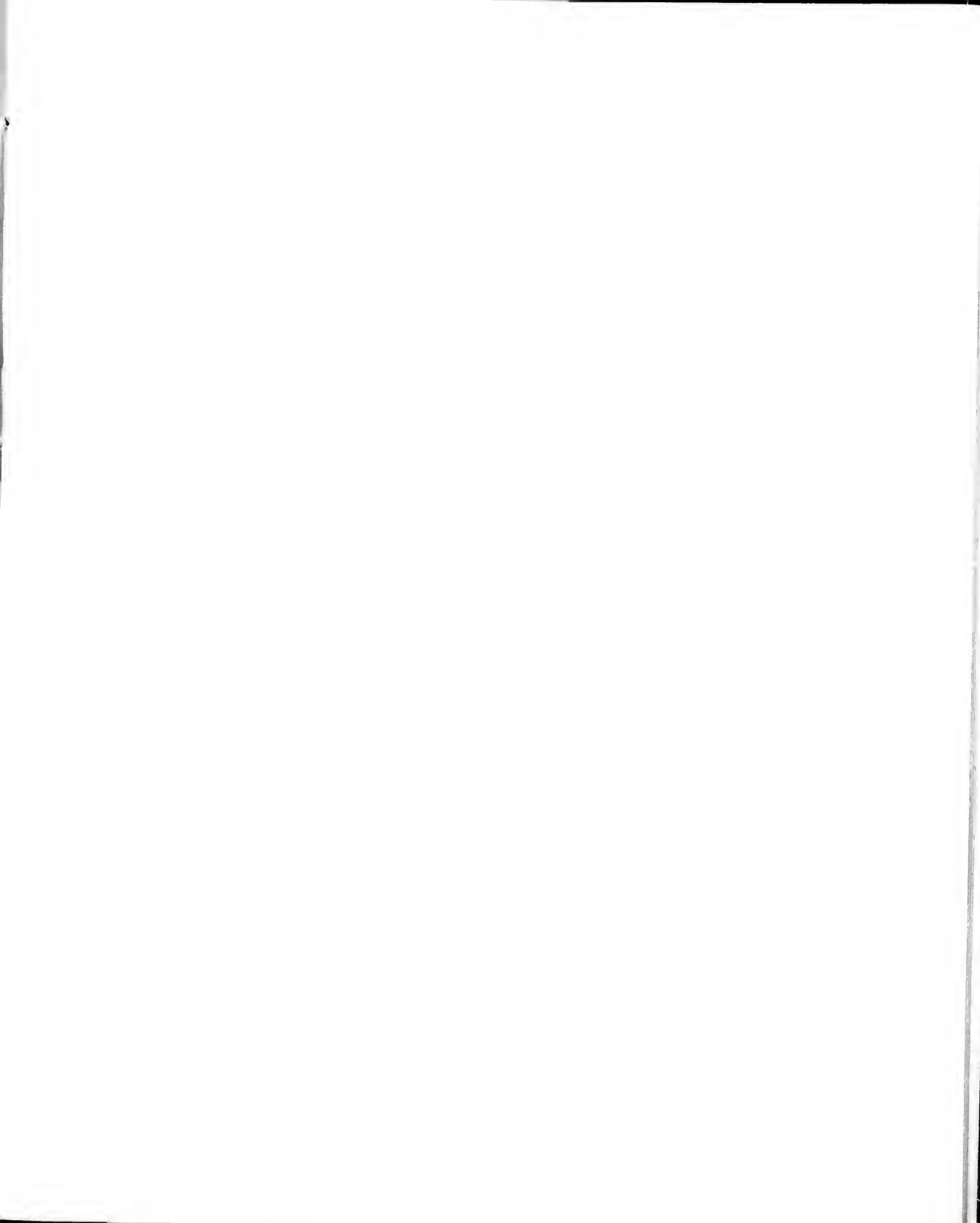
L. B. STEWART, P.L.S., D.T.S.,
Lecturer in Surveying.

J. GALBRAITH, M.A., Assoc. M. Inst. C.E.,
Principal of the School of Practical Science,
Professor of Engineering.

SCHOOL OF PRACTICAL SCIENCE,
Queen's Park, Toronto.



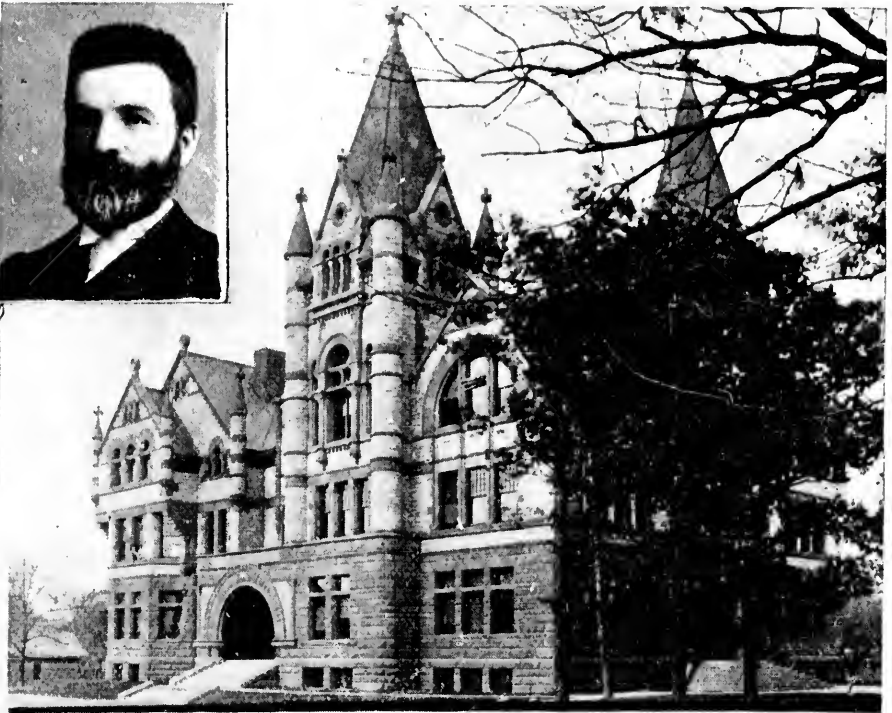


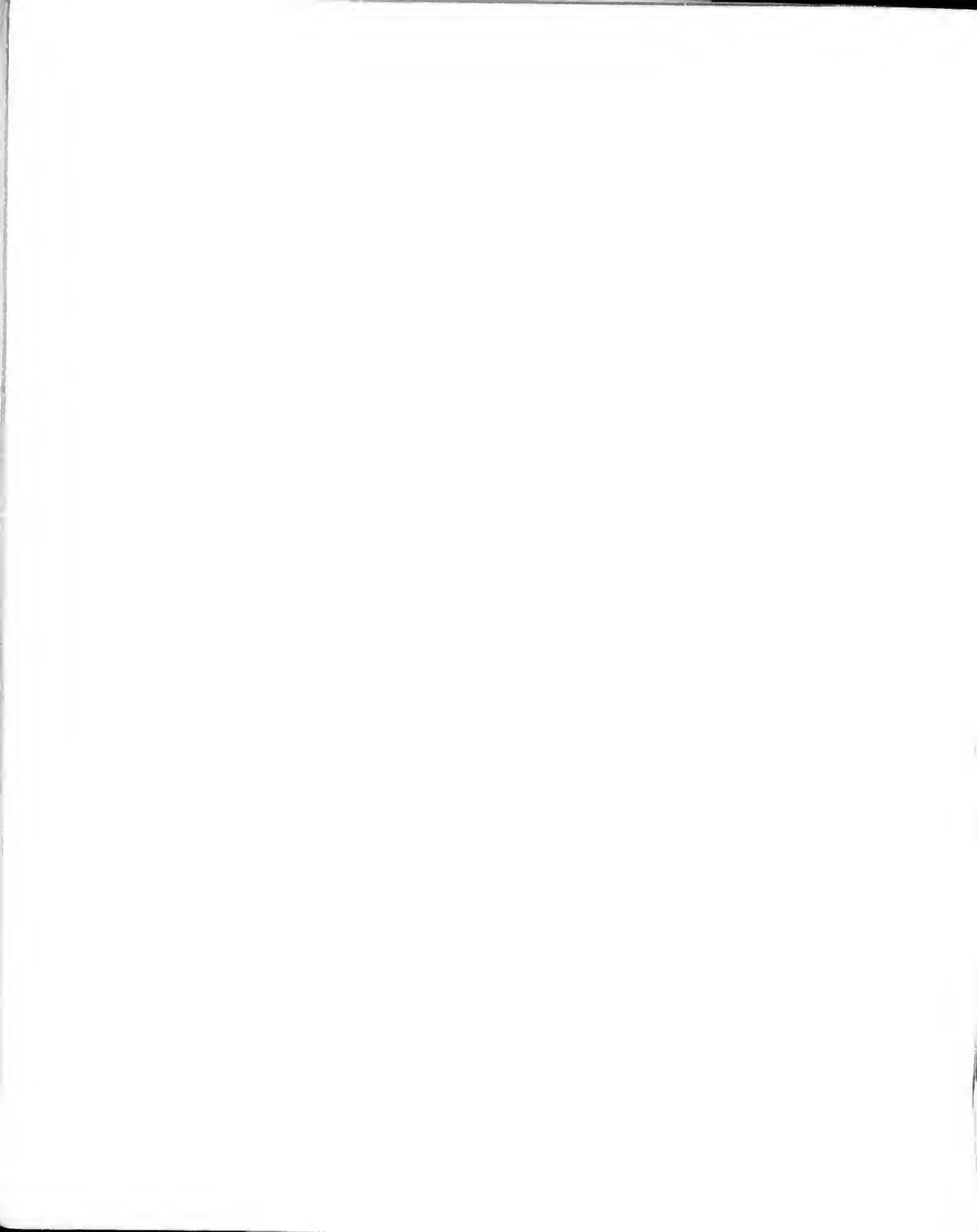


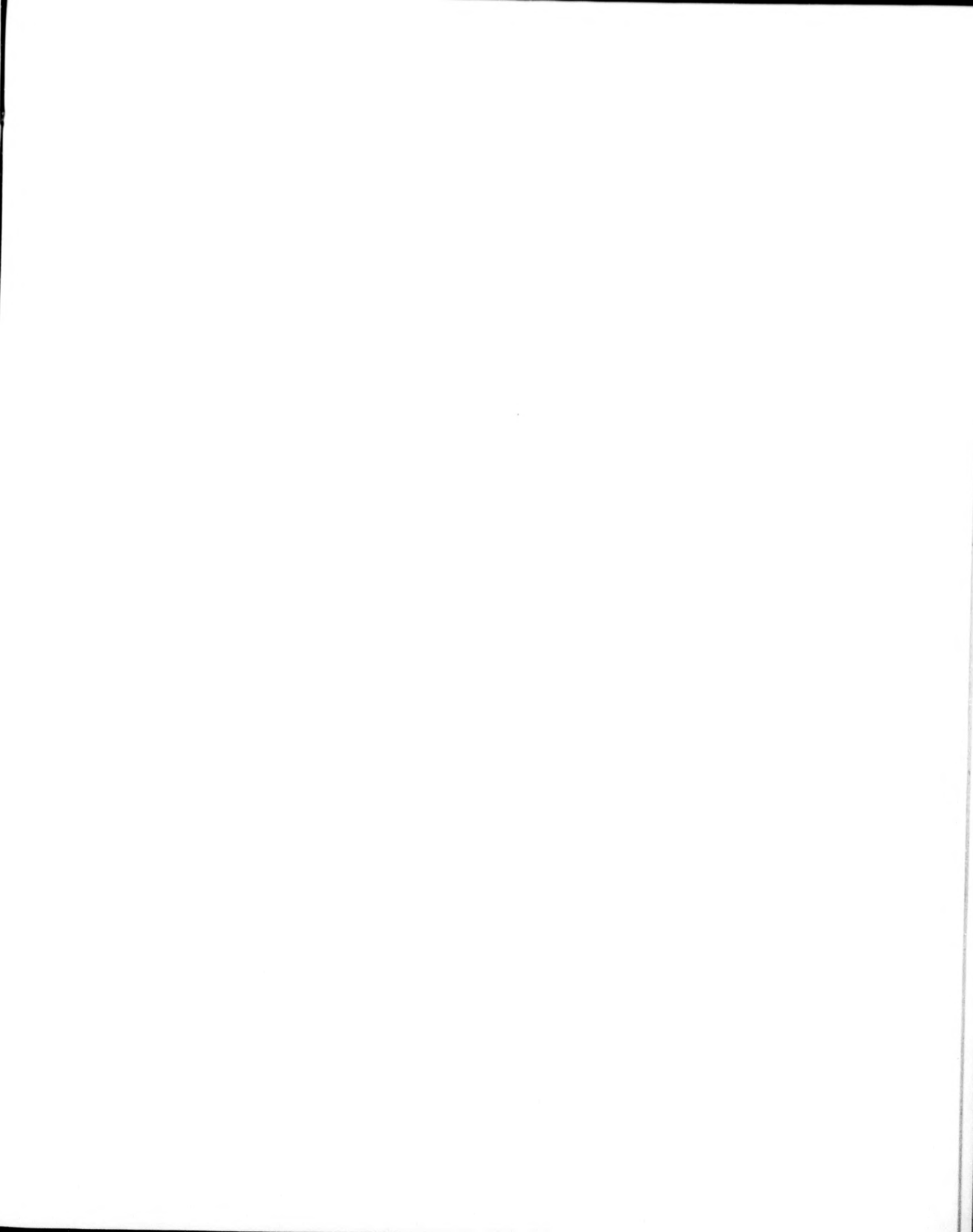
WYCLIFFE COLLEGE,
Queen's Park, Toronto.

JANITOR "BOB."

VICTORIA COLLEGE,
Queen's Park, Toronto.







FACULTY OF VICTORIA COLLEGE.

REV. ALFRED H. REYNAR, M.A., LL.D.,
Professor of English Literature.

A. R. BAIN, M.A., LL.D.,
Professor of Ancient History.

A. J. BELL, Ph.D.,
Professor of Latin.

JOHN PETCH, M.A.,
Professor of French.

REV. E. J. BADGELY, M.A., LL.D.,
Professor of Mental and Moral Philosophy.

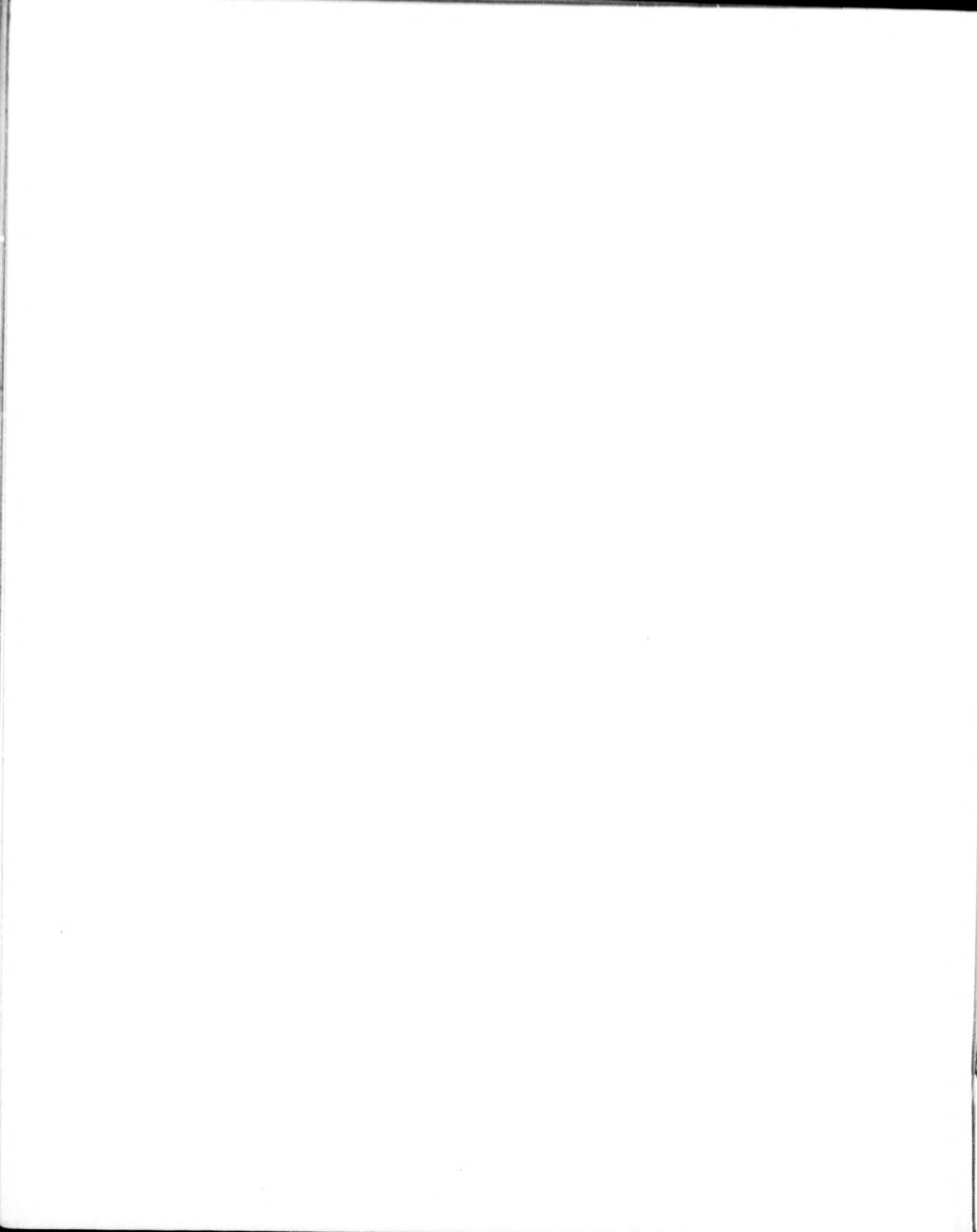
REV. F. H. WALLACE, M.A., B.D.,
Professor of New Testament Exegesis.

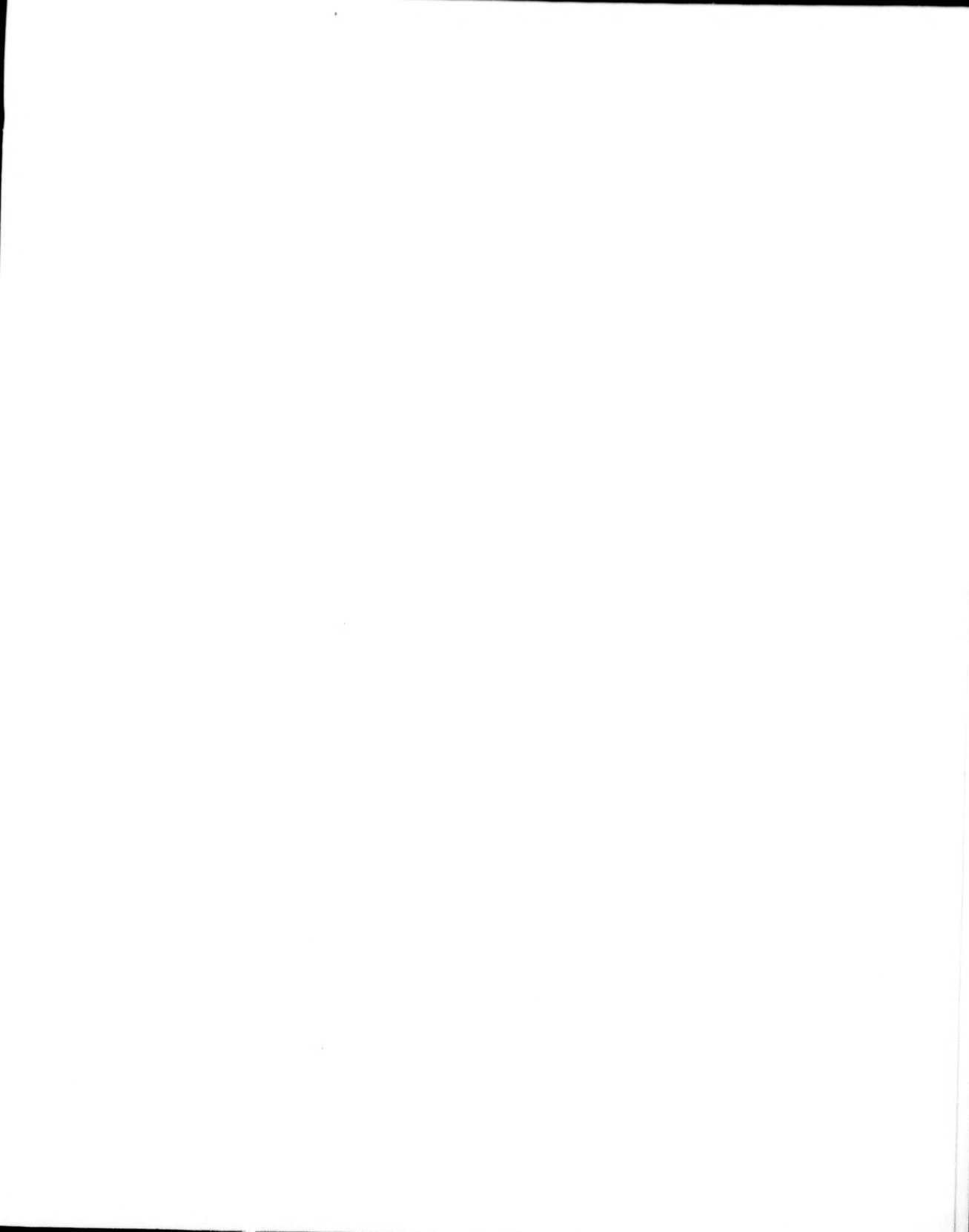
REV. J. McLAUGHLIN, M.A., B.D.,
Professor of Oriental Languages.

L. E. HORNING, M.A., Ph.D.,
Professor of German and Old English.

REV. JOHN BURWASH, M.A., D.Se.,
Professor of Practical Theology.







WYCLIFFE COLLEGE FACULTY.

REV. GUS. ADOLF KUIHRING,
Dean in Residence,

REV. F. H. DeVERNET,
Professor of Homiletics.

REV. JAMES PATERSON SHERATON, D.D.,
Principal Wycliffe College,
Professor of Systematic Theology.

REV. GEORGE M. WRONG, B.A.,
Professor of Apologetics and Liturgies,

KNOX COLLEGE FACULTY.

REV. WM. McLAREN, D.D.,
Professor of Systematic Theology.

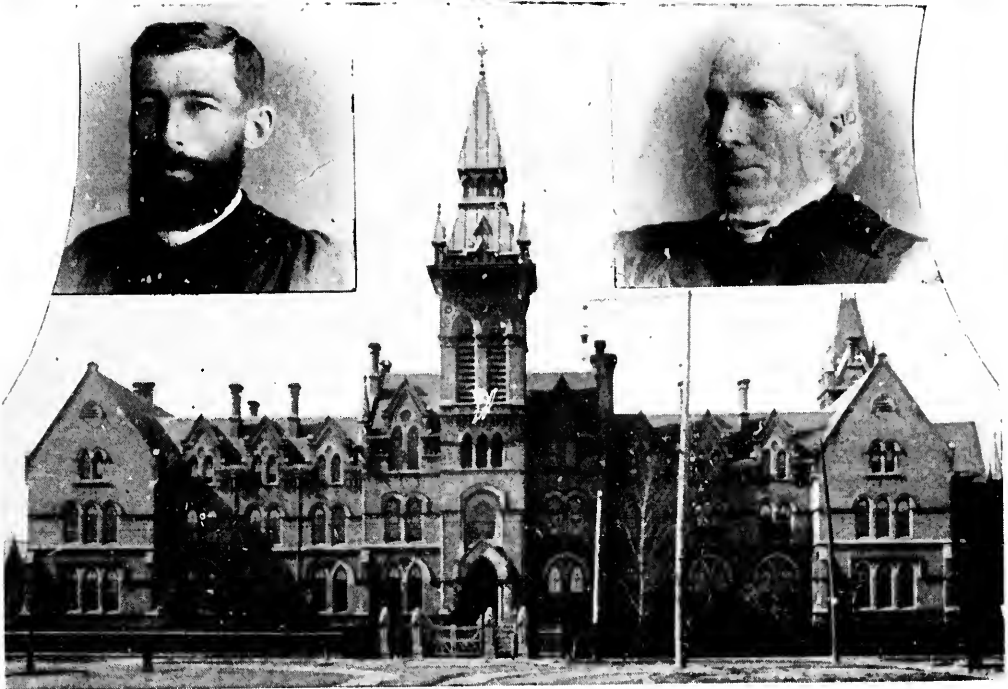
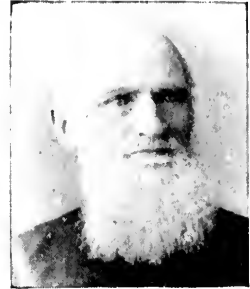
REV. WM. CAVEN, D.D.,
Principal of Knox College. Professor of Exegetics

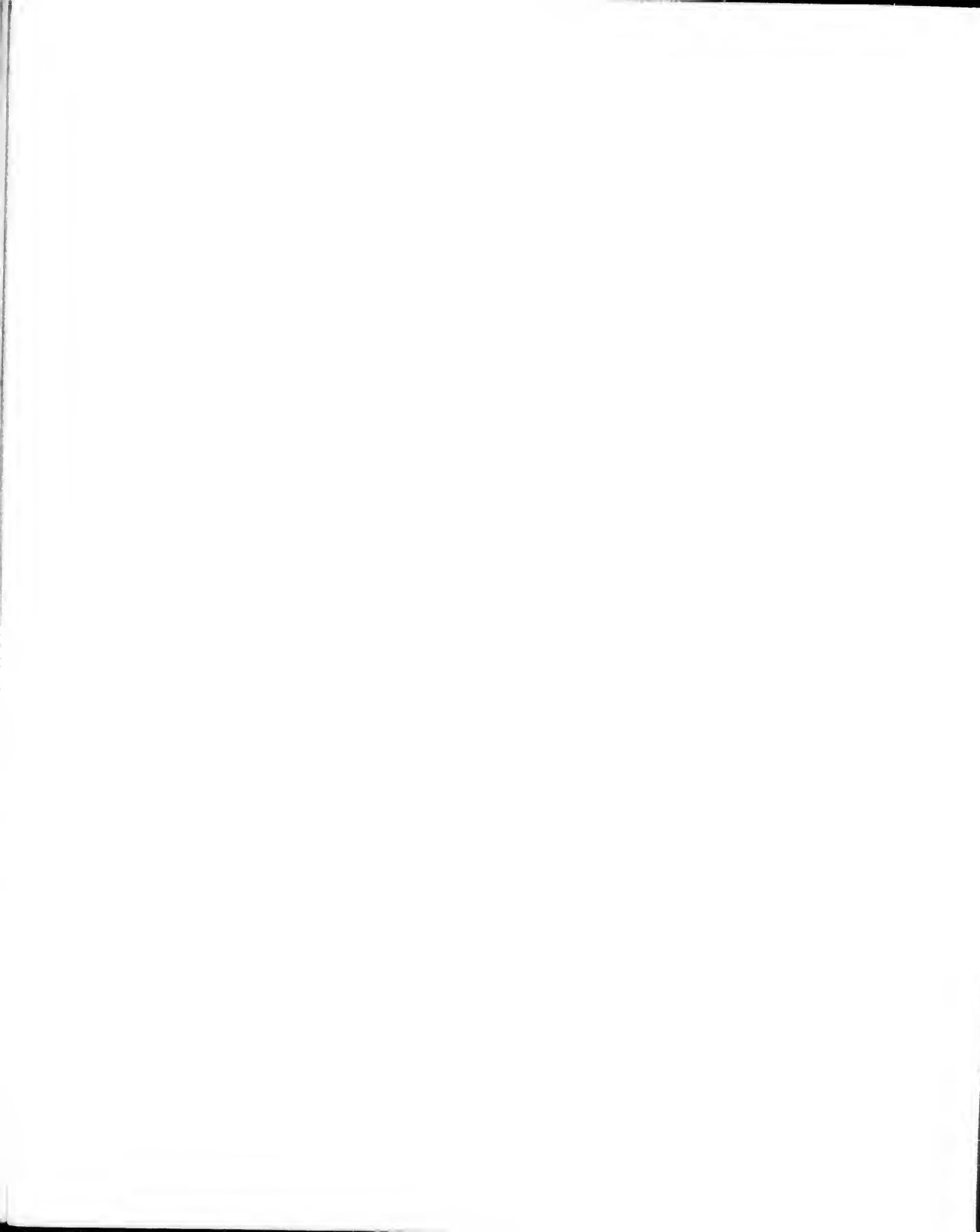
REV. WILLIAM GREGG, D.D.,
Professor of Church History.

REV. R. Y. THOMSON, M.A., B.D.,
Professor of Apologetics and
Old Testament Literature

REV. J. J. A. PROUDFOOT, D.D.,
Lecturer in Homiletics and
Pastoral Theology.

KNOX COLLEGE.







J. B. WILLMOTT, D.D.S., L.D.S.,
Dean of the College of Dental Surgeons,
Toronto,

ONTARIO COLLEGE OF PHARMACY,
Gerrard St. East, Toronto,

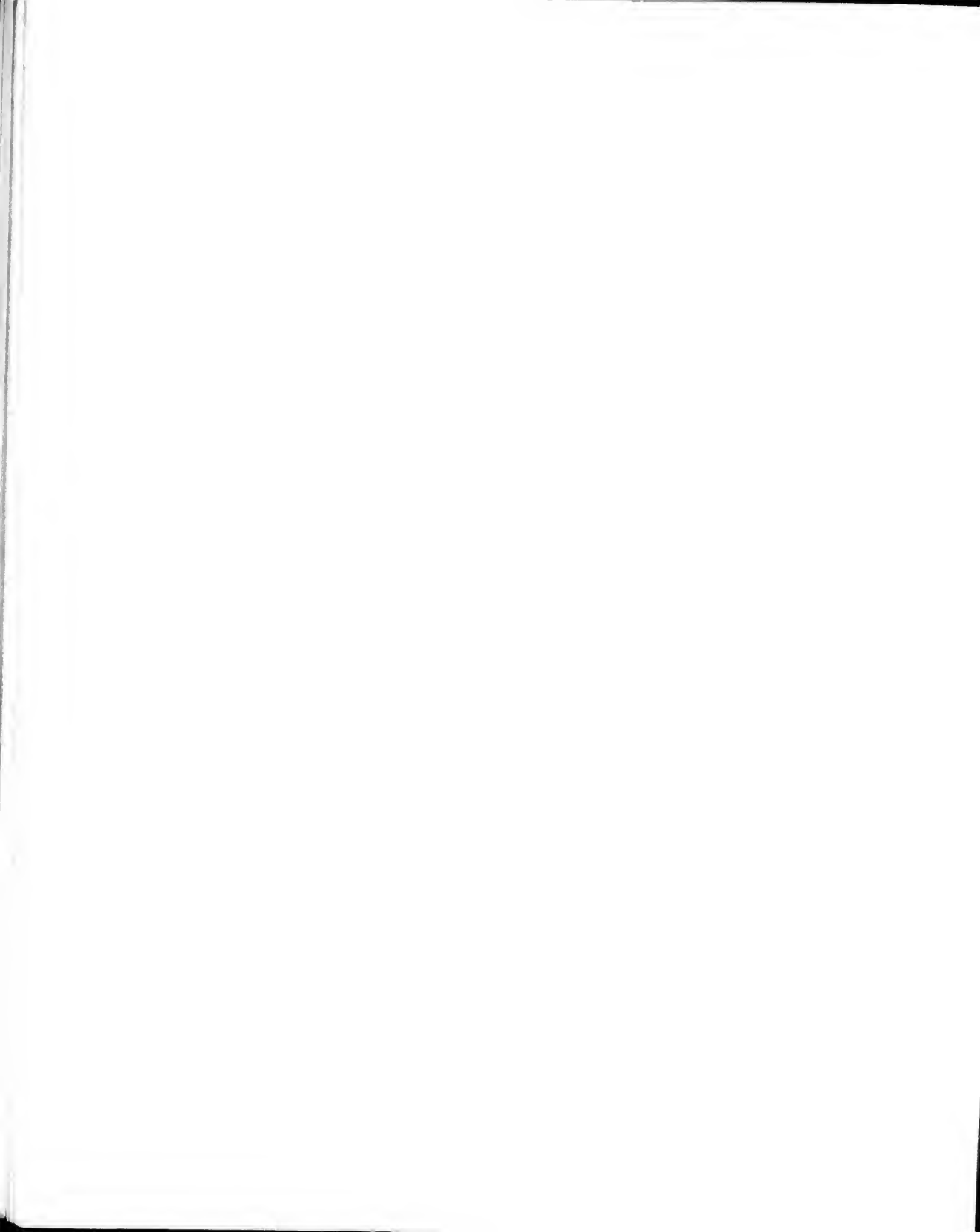
MEDICAL ASSOCIATION BUILDING,
Cor. Bay and Richmond Sts.,
Toronto,

A. Y. SCOTT, B.A., M.D.,
Principal of the Ontario College
of Pharmacy,

REV. FATHER JOHN R. TEEFY, B.A.,
Superior of St. Michael's College.

ST. BASIL'S CHURCH AND ST. MICHAEL'S COLLEGE,
St. Joseph Street, Toronto.





W. T. ATKINS, M.D., LL.D.,
Dean of the Medical Faculty of the University of Toronto,
Professor of Surgery.

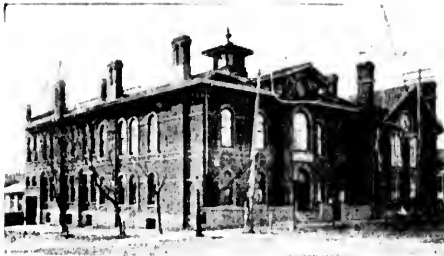
WALTER B. GEIKIE, M.D., C.M., D.C.L., F.R.C.S., Ed., F.R.C.P., London, Eng.,
Dean of Trinity Medical College,
Professor of Medicine and Clinical Medicine.

VICTORIA HOSPITAL FOR SICK CHILDREN,
College Street, Toronto.

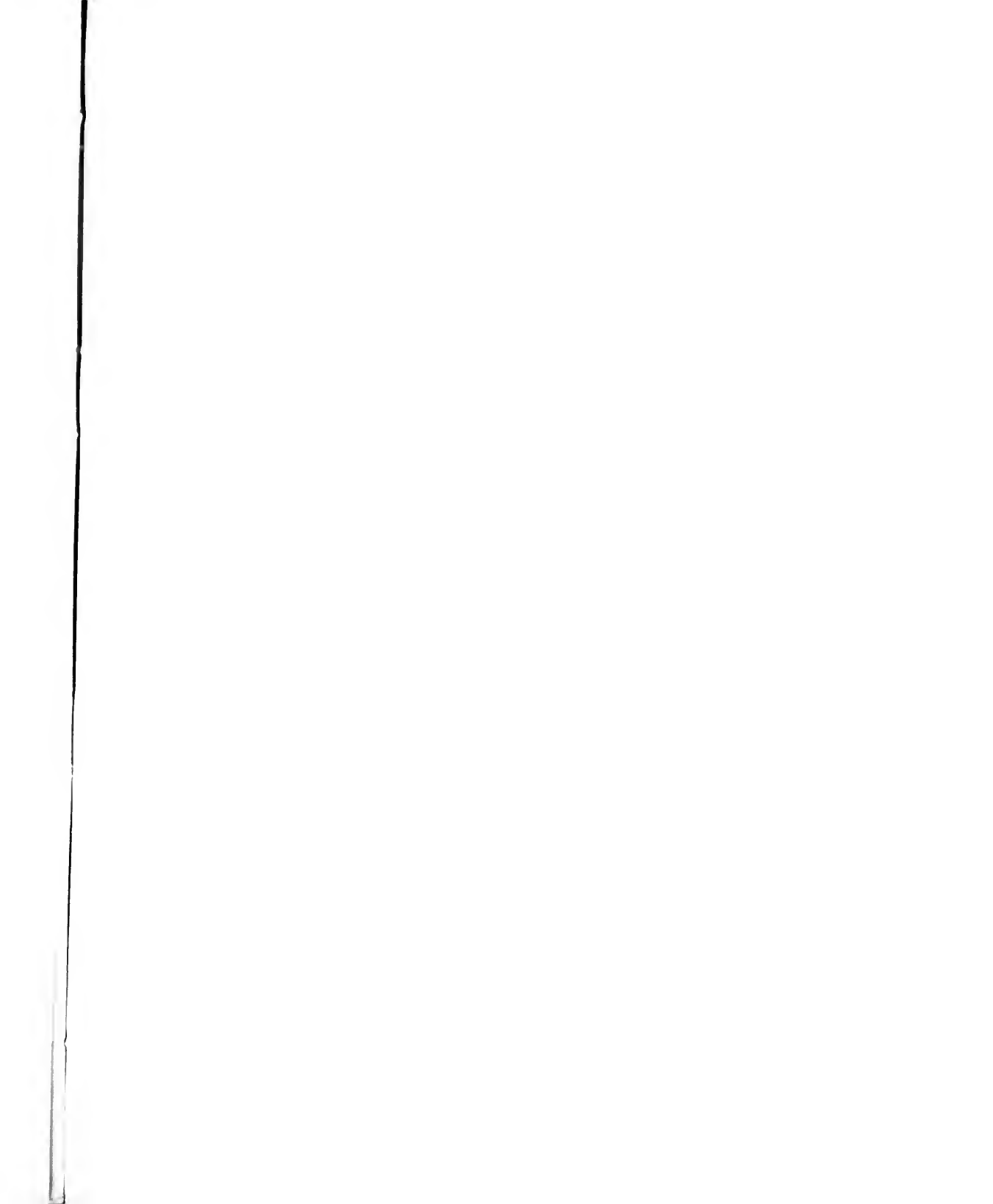
TORONTO SCHOOL OF MEDICINE,
Gerrard Street East, Toronto.

TRINITY MEDICAL COLLEGE,
Spruce Street, Toronto.

TORONTO GENERAL HOSPITAL,
Gerrard Street East, Toronto.







BIOLOGICAL DEPARTMENT,
University of Toronto,
Queen's Park.

F. H. TORRINGTON, Esq.,
Principal of the Toronto
College of Music.

TORONTO COLLEGE OF MUSIC,
Pembroke St.

JAMES MILLS, M.A., LL.D.,
Principal of the Ontario
Agricultural College.

ONTARIO AGRICULTURAL COLLEGE,
Experimental Farm,
Guelph, Ont.

